

MX CRYO 20 PRO

SUSTAINABLE SOLUTION FOR YOUR
PRODUCTION PROCESSES

MIRAI X CRYO 20 PRO PRODUCT DATASHEET

- **THE WIDEST TEMPERATURE RANGE**
From -160°C to +90°C*
- **MOTOR POWER**
20 kW
- **VARIOUS INDUSTRY APPLICATIONS**
- **STAINLESS STEEL CASE**
- **ZERO GWP**

With the air cycle technology

**The temperature range varies based on the type of HTF selected and will be confirmed during the ordering process.*



MIRAI

BENEFITS



AIR AS REFRIGERANT

0 GWP, 0 ODP, and 0 TFA
Environmentally friendly
Refrigerant free of charge



TEMPERATURE ACCURACY

$\pm 0,5^{\circ}\text{C}$ under changing load



ENERGY EFFICIENCY

High cycle efficiency
Inverter driven motor



NO VIBRATION

Turbo-compressor design
eliminates vibration



LOW OPERATING COSTS

Long equipment lifecycle
Low maintenance



TEMPERATURE RANGE*

Any temperature
from $+90^{\circ}\text{C}$ to -160°C



WARRANTY

2 years of warranty



ISO CERTIFICATION

ISO 9001:2020 certified



30 SEC SYSTEM RESTART

Rapid automatic restart of the
cooling machine in case of power
interruptions.



MACHINE WHEELS

For convenience transportation of
machine in manufacture



INTERNAL EXPANSION TANK

Installation of internal expansion
tank, 50 liters in capacity.

OPTIONS



REMOTE MONITORING

Available remote monitoring or
remote access systems



VARIOUS HIGH-LEVEL COMMUNICATION PROTOCOLS



CUSTOMIZED HTF CONNECTION



CUSTOMIZED WATER CONNECTION



EXTENDED WARRANTY

Up to 4 years



© 2025 MIRAI Intex®, 09/2025

Introducing the **MIRAI X CRYO PRO**, our latest innovation in cryochiller technology. This advanced refrigeration system is tailored to meet the diverse needs of industries ranging from semiconductor manufacturing to vacuum drying and pharma applications.

The **MIRAI X CRYO** has **20 kW** motor power configuration and **Stainless steel case**, accommodating a variety of application requirements.

COMPLIANCE WITH EU ENVIROMENTAL REGULATIONS

The **MIRAI X CRYO 20 PRO** is fully compliant with EU and global environmental standards, including REACH, RoHS, and F-gas regulation. This compliance underscores our dedication to producing systems that not only meet but exceed the most stringent environmental requirements.

THE WIDEST TEMPERATURE RANGE*

MIRAI X CRYO 20 PRO has a temperature range from -160°C to $+90^{\circ}\text{C}$ with temperature accuracy $\pm 0.5^{\circ}\text{C}$ under changing load.

VARIOUS INDUSTRY APPLICATIONS

MIRAI Intex machines are suitable for a wide range of applications. **MIRAI X CRYO 20 PRO** was developed for industrial processes, pharma applications, vacuum coating and etching.

ZERO GWP

With the air cycle technology, **MIRAI X CRYO 20 PRO** is 100% eco-friendly.

**The temperature range varies according to the type of HTF used.*

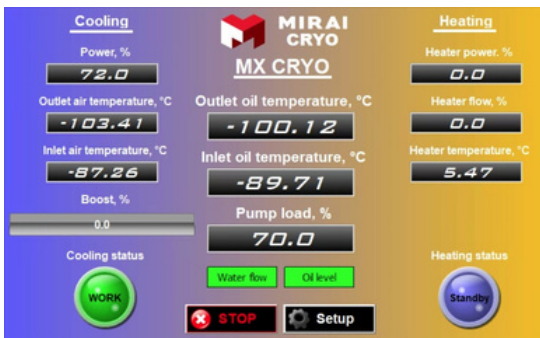
SETTINGS WINDOW



STANDBY MODE



COOLING MODE



HEATING MODE



CONTROL PANEL

The control panel is a tool for setting the operating modes of the machine, there are 3 modes in total:

- » **Cooling mode**
- » **Heating mode**
- » **Standby mode**

This control panel allows you to easily change settings without any additional intervention in the machine, simply by using the touch screen or by sending a command from high-level control system.

Allows to use industrial protocols:

- » **ProfiNET**
- » **EtherCAT**
- » **EtherNET/IP**
- » **Powerlink**

**Another protocols by request.*

INSTALLATION

PLUG & PLAY SOLUTION

The **MIRAI X CRYO 20 PRO** machine is the ideal solution for retrofitting in existing installation and is easy to implement in new projects due to its Plug & Play design, compatible with multiple industry standard connection types.

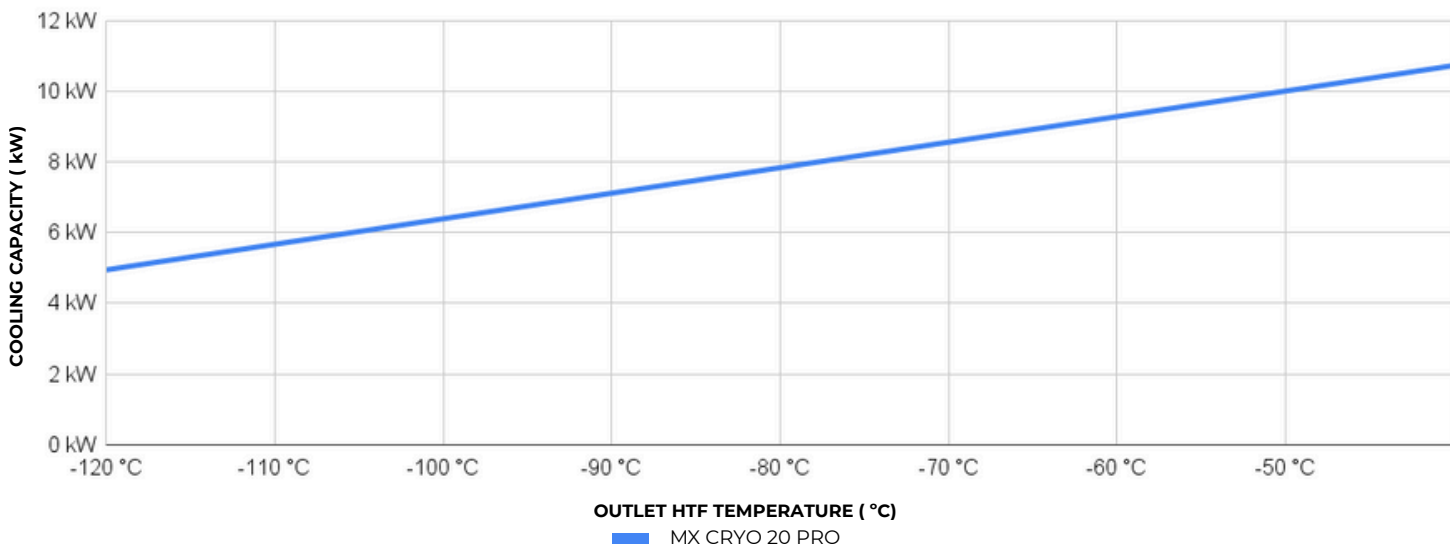
See the **MIRAI X CRYO 20 PRO** chiller in action across various industries, from pharma applications and semiconductor manufacturing to industrial processes and storage.



COOLING CAPACITY

Cooling capacity of the **MIRAI X CRYO 20 PRO** over a temperature range of -40 °C to -120 °C.

At cooling water temperature +10 °C.

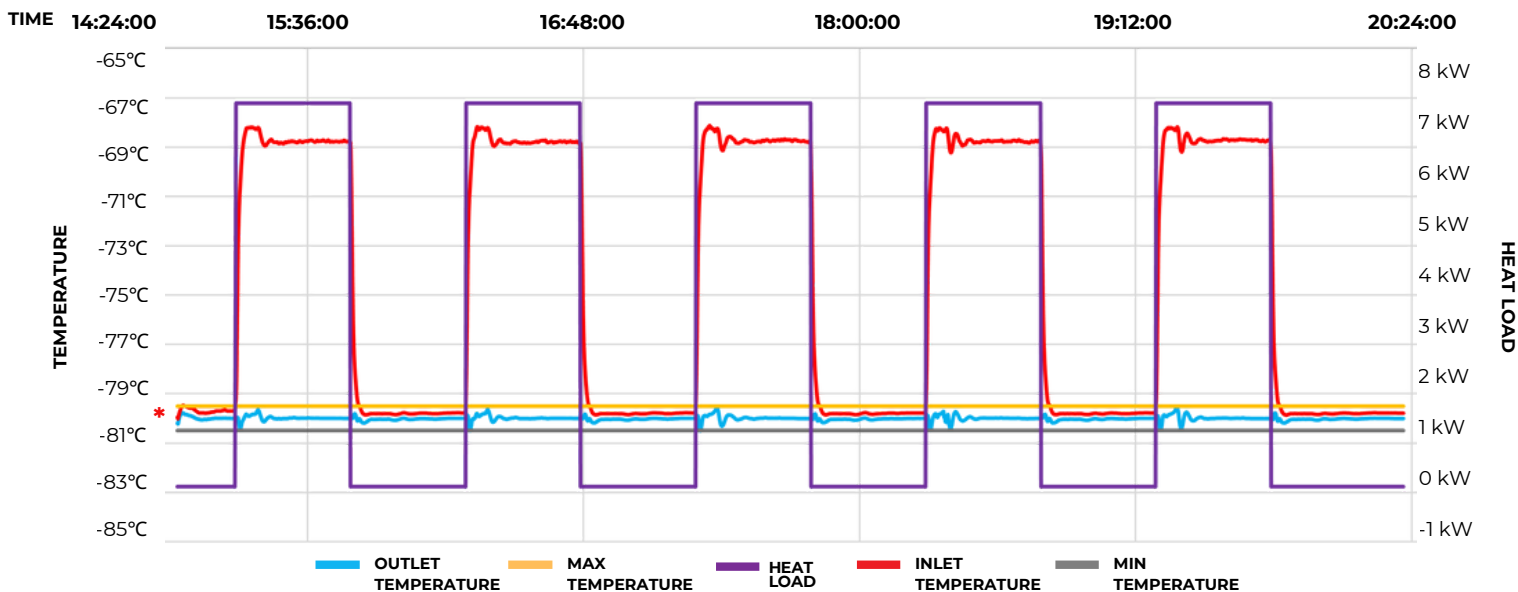


PERFORMANCE

This test focuses on temperature maintenance when the heat load on the machine is changing. Specifically in this case, the test was conducted at a change from 0 kW to 7 kW. The results showed that temperature **control under changing load is $\pm 0.5^\circ$** .

Above the graph is the time interval when the test started and ended, how long the loads were measured for.

The mark [*] indicates the location where the temperature change was measured.



Test result on the MX20

FEATURES

PRESSURIZATION

Automatic working medium pressure control and adjustment

HMI

7" color touch screen display, parameter graphs, system control

SELF-DIAGNOSTICS

The **MIRAI X CRYO 20 PRO** machine is equipped with sensors that immediately send a signal of any potential malfunction

COMPLIANCE

- >> Pressure equipment directive (PED) 2017/68/EU, Module A2 Certificate
- >> Electromagnetic compatibility directive (EMC) Directive 2014/30/EU Certificate
- >> Low voltage directive (LVD) 2014/35/EU Certificate
- >> Machinery directive (MD) 2006/42/EC
- >> F-gas regulation
- >> Reach, Rohs

SPECIFICATIONS

Performance is nominal and individual units may vary. The efficiency of each refrigeration unit will depend on the specific operating conditions.

TECHNICAL DATA

MX CRYO 20 PRO

TEMPERATURE RANGE ^{*1}	From -160°C up to +90°C
RATED MOTOR POWER (kW)	20
COMPRESSOR	Mirai Turbo-Compressor (water-cooled)
REFRIGERANT	Natural Air (R729)
COOLING CAPACITY (-80°C) (kW) ^{*2}	7,7
TEMPERATURE ACCURACY UNDER CHANGING LOAD	±0.5°C

HTF PARAMETERS

MIN PRESSURE (bar)	1
MAX PRESSURE (bar)	10
NOMINAL ^{*2} / MAX ALLOWED PROCESS PRESSURE DROP ^{*3} (kPa)	20/50
MIN HTF FLOW (l/min)	14,3
NOMINAL ^{*2} HTF FLOW (l/min)	28,6
MAX HTF FLOW (l/min)	72
MAX VOLUME HTF CIRCUIT MIRAI (WITHOUT HTF TANK) (l)	~22
MAX VOLUME HTF CIRCUIT CLIENT PROCESS (l)	~25
HTF CONNECTION	Any, upon customer specifications

WATER COOLING

WATER CONNECTION	MPT 1 "
NOMINAL PRESSURE DROP (bar)	1
MAX ALLOWED PRESSURE ON WATER INLET (bar)	10
COOLING WATER TEMPERATURE RANGE ON INLET	From +6°C to +30°C (other temperatures are possible on request)
MIN COOLING WATER MASS FLOW (kg/h)	2000
NOMINAL COOLING WATER MASS FLOW (kg/h)	2500
MAX COOLING WATER MASS FLOW (kg/h)	4000
WATER QUALITY	See specification ^{*4}

GENERAL TECHNICAL SPECIFICATION

SAFETY PROTECTION	High pressure protection, water supply cut-off protection, over-current protection, high temperature protection, sensor failure protection, heater protection
SOUND PRESSURE, AT A DISTANCE OF 1M FROM <u>CM</u> (dB)	Up to 70
CONTROL SYSTEM	KEB system compatible with digital communication protocols ProfiNET, EtherCAT, EtherNET/IP, and Powerlink. Another protocols by request

POWER REQUIRMENTS

POWER SUPPLY	~3PE, 400 V/440 V/480 V, 50 Hz/60 Hz
TOTAL CONSUMPTION	25,5
POWER CONSUMPTION ON THE SHAFT IN THE COOLING MODE (kW)	20
HEATER POWER (kW)	12
PUMP POWER (kW)	2,2

DIMENSIONS

DIMENSIONS (HxLxW) ±5 mm	1795x1300x940
WEIGHT (kg)	~860

*1 THE TEMPERATURE RANGE VARIES BASED ON THE TYPE OF HTF SELECTED AND WILL BE CONFIRMED DURING THE ORDERING PROCESS.

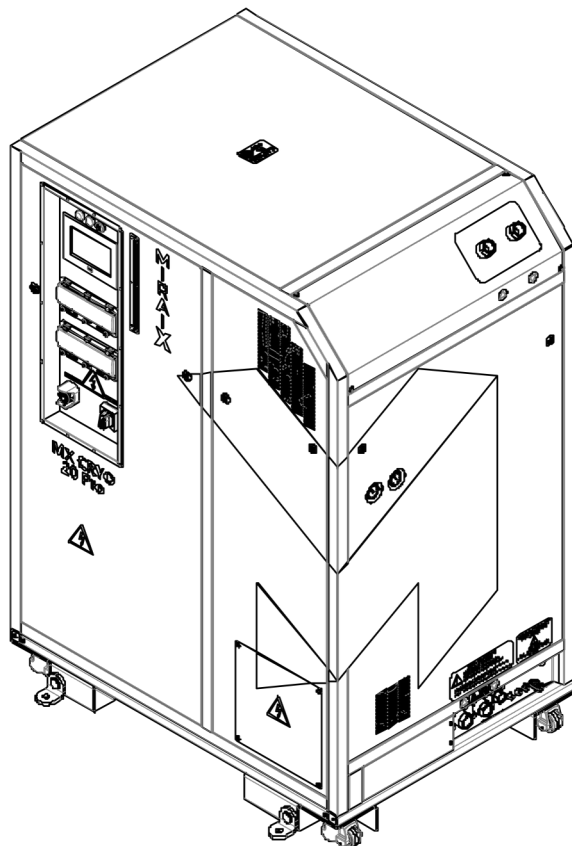
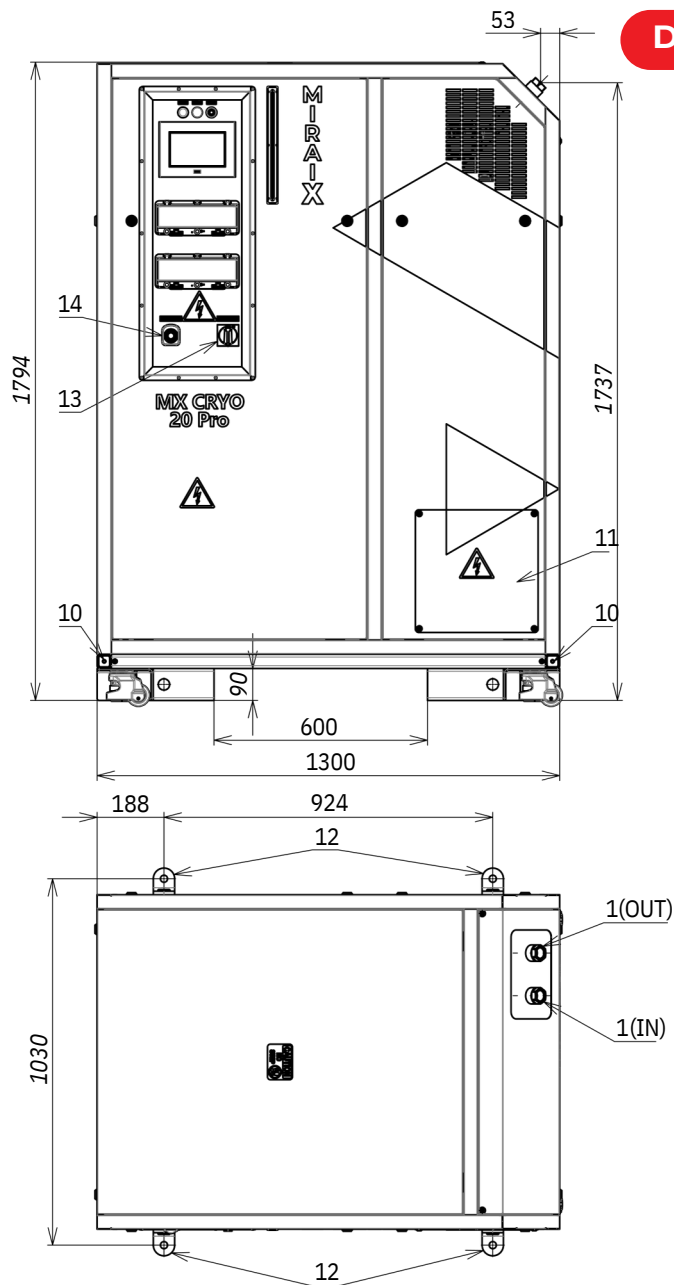
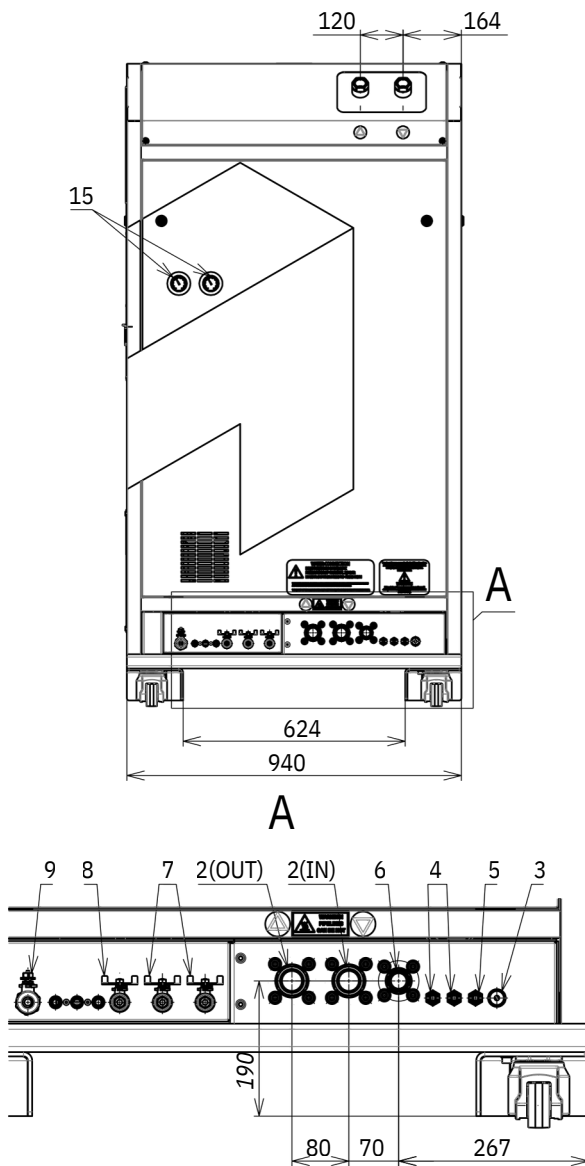
*2 DATA ARE SPECIFIED FOR FRAGOLTERM X-T9-A OIL (INLET=-70°C / OUTLET=-80°C) AT COOLING WATER +10°C

*3 COOLING CAPACITY WILL BE REDUCES BY 600 W

*4 THE WATER SHOULD CONTAIN A CORROSION INHIBITOR THAT PROTECTS ALUMINUM ALLOYS AND COPPER IN THE CONCENTRATION RECOMMENDED BY THE MANUFACTURER (FOR DETAILED INFORMATION CONTACT MIRAI INTEX.)

CM - COOLING MACHINE

DIMENSIONS



1. Heat transfer fluid (HTF) connection: NPT(f)1
2. Cooling water/glycol mixture: NPT(f)1
3. Air/Nitrogen, Quick disconnect coupling DN 7.2 (Euro standard)
4. Water drain, Connection for plastic tube 8/6mm
5. Condensate drain, Connection for plastic tube 8/6mm
6. Ventilation and overflow from the tank: G(f)3/4
7. HTF drain
8. HTF fill and drain
9. Vacuum valve
10. Grounding point (PE) - M8
11. Power connection hatch
12. Fixing place to floor (optionally with brackets)
13. Main switch
14. Emergency stop button
15. Pressure gauge